

# Vesta Round



## Product information

Visit [furninova.com](https://furninova.com) for additional products, catalogues and information.



**furninova**<sup>®</sup>

# Vesta Round

Drawings	Configuration	Drawings	Configuration
	<b>2,5-Module L/R</b> W • D • H* 191x94x74 cm Seat Height • Seat Depth : 42 x 63 cm 1.18 m <sup>3</sup> Weight: 57 kg Legs: 4		<b>End Part-Module L/R</b> W • D • H* 161x94x74 cm Seat Height • Seat Depth : 42 x 63 cm 1.09 m <sup>3</sup> Weight: 55 kg Legs: 4
	<b>1,5-Module L/R</b> W • D • H* 116x94x74 cm Seat Height • Seat Depth : 42 x 63 cm 0.74 m <sup>3</sup> Weight: 42 kg Legs: 4		<b>Curved end part-Module L/R</b> W • D • H* 206x157x74 cm Seat Height • Seat Depth : 42 x 63 cm 2.27 m <sup>3</sup> Weight: 71 kg Legs: 6
	<b>1,5-Module</b> W • D • H* 94x94x74 cm Seat Height • Seat Depth : 42 x 63 cm 0.52 m <sup>3</sup> Weight: 31 kg Legs: 4		<b>Curved end part-Module small L/R</b> W • D • H* 174x148x74 cm Seat Height • Seat Depth : 42 x 63 cm 1.83 m <sup>3</sup> Weight: 59 kg Legs: 6
	<b>1-Module</b> W • D • H* 85x94x74 cm Seat Height • Seat Depth : 42 x 63 cm 0.47 m <sup>3</sup> Weight: 27 kg Legs: 4		<b>Footstool</b> W • D • H* 95x65x42 cm Seat Height • Seat Depth : 42 x 66 cm 0.23 m <sup>3</sup> Weight: 15 kg Legs: 4
	<b>Chl-Module L/R</b> W • D • H* 117x160x74 cm Seat Height • Seat Depth : 42 x 129 cm 1.35 m <sup>3</sup> Weight: 60 kg Legs: 4		<b>Back cushion 75x25 cm</b> W • D • H* 75x25x12 cm 0.02 m <sup>3</sup>
	<b>Corner-Module XL L/R</b> W • D • H* 120x94x74 cm Seat Height • Seat Depth : 42 x 63 cm 0.83 m <sup>3</sup> Weight: 39 kg Legs: 4		<b>Back cushion universal</b> W • D • H* 65x15x55 cm 0.06 m <sup>3</sup> Weight: 1.5 kg
	<b>1,5-Module curved</b> W • D • H* 147x127x74 cm Seat Height • Seat Depth : 42 x 63 cm 1.34 m <sup>3</sup> Weight: 44 kg Legs: 4		<b>Nippon side table (Black, Oak, Walnut)</b> W • D • H* 95x40x42 cm 0.20 m <sup>3</sup> Weight: 23 kg

\*Note that the dimensions may differ +/-3% depending on upholstery and combination.

## Comfort

<b>DE</b> Foam Firm	<b>Foam firm (Comfort DE)</b> Seat Cold foam covered with fibre padding.		<b>Back</b> The inner core is cold foam covered with fibre padding.	
<b>C1</b> Foam Firm	<b>Foam (Comfort C1)</b> Seat Cold foam covered with fibre padding.		<b>Back</b> The inner core is cold foam covered with fibre padding.	
<b>C2</b> Feather Soft	<b>Feather medium (Comfort C2)</b> Seat Inner core of cold foam with a feather top.		<b>Back</b> Inner core of cold foam with a feather top.	
<b>CM</b> Memory Foam	<b>Comfort Memory (Comfort CM)</b> Seat Cold foam with memory foam on top, covered with fibre padding.		<b>Back</b> Inner core of cold foam with a feather top.	

# Vesta Round



## Sewing

Choose between standard seam and special seam (French seam).



## Corner XL

To determine whether your Corner XL module is Left (CXL L) or Right (CXL R), stand in front of the sofa. If the longest back part is on your right side, it is a Corner XL Right. If the longest back part is on your left side, it is a Corner XL Left.



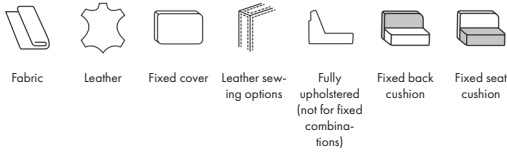
## Vesta

The height of the sofa is based on the 10 cm leg

## Leg options



## Upholstery



Std.

Spec.